

THE
FOUNDRY
COWORK



Affordable, flexible private office rental

NEW
GOSFORD
LEVEL ONE
SUITES

Access a professional workspace without the stress and financial burden of a long-term lease, fit-out, furnishings & overheads.

Our suite of private offices are plug 'n' play ready for you to move right in; beautifully fitted out and fully furnished including 27" monitors.

A flat, all-inclusive monthly fee covers rent and all of your running costs*, ensuring your business has no surprise expenses.

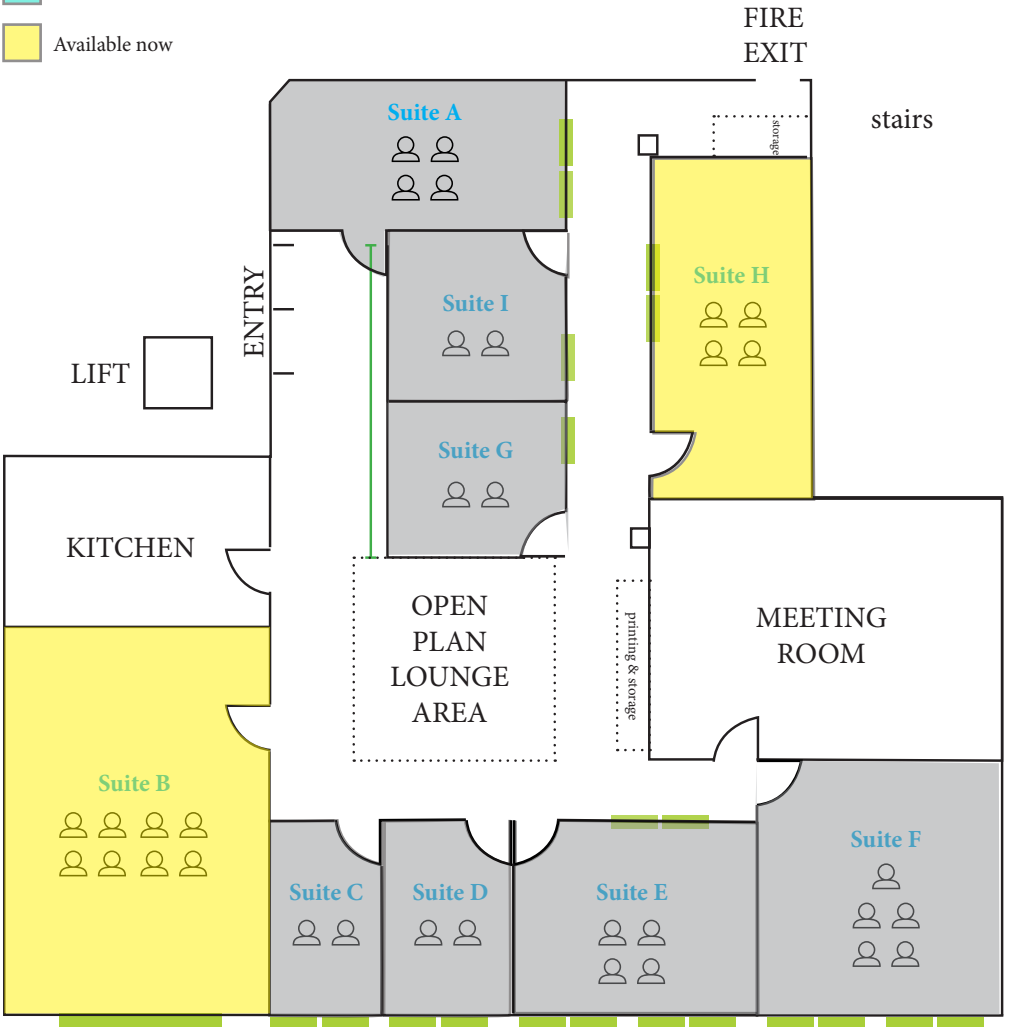
With flexible terms from 6-months, the office space is scalable to accommodate your team as your business grows or simplifies.

*You must take out your own contents insurance for any personal or business property

thefoundrycowork.com.au

Floor Plan

- Taken
- Available soon
- Available now



Mann Street

Pricing per month (ex GST) on 6-month minimum term

Suite B	8-person premium	\$2,900	1 available
Suite F	5-person premium	\$2,000	1 available
Suite E	4-person premium	\$1,800	1 available
Suites A/H	4-person	\$1,600	2 available
Suites C/D	1-2 person premium	\$ 950	2 available
Suites G/I	1-2 person	\$ 900	2 available



Inclusions

- 24/7 access
- Fully furnished including desks, chairs, storage, monitors, art, rug & plants.
- NBN wifi (business grade fibre to the premises)
- Signage: level one entry signboard and private office window decals
- Power
- Cleaning
- Security
- Printing, copying & scanning
- Office supplies
- Fully stocked kitchen: breakfast (cereal, toast, raisin toast, fruit), Nespresso coffee, specialty teas, chai latte, hot chocolate, chilled water, soft drink, milk (various types), biscuits, snacks, beer & wine.
- 8 hours/mth free use of meeting rooms
- 25% discount on additional meeting room use or hotdesk access
- Ground floor reception concierge
- Exclusive invitation to Foundry members-only social & business events, WhatsApp group and lotto syndicate

THE
FOUNDRY
COWORK



×
**Connect.
Collab.
Thrive.**



×
**Meet &
work.**



×
**Better
together.**



×
**Grow
your biz.**

